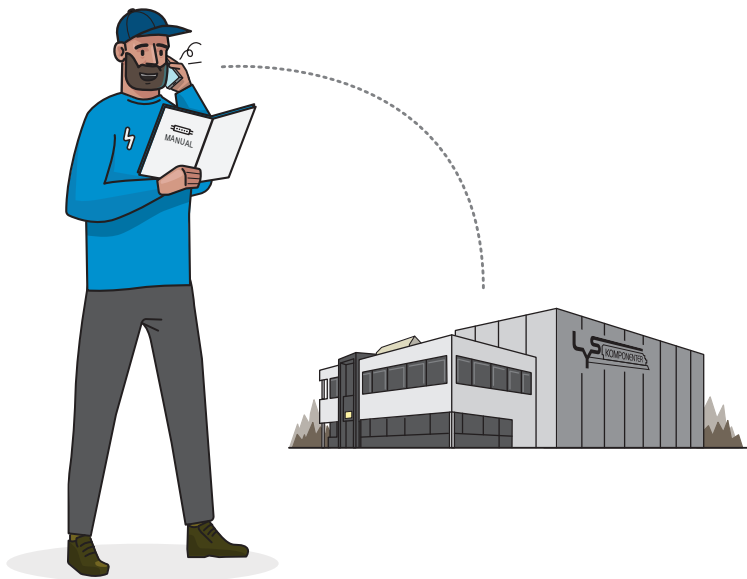



LED strip


SLC
Developed by
The Light Group



- | | | | | |
|------------------------------------|---|--------------------|------------------|--------------------------|
| Drill
 | Soldering iron
 | Profile
 | Cover
 | LED-strip
 |
| Measuring tape
 | Scissors
 | | | Cables
 |
| Tape
 | Screws (1x per 30cm profile)
 | | | Power Control
 |
| End caps x2 per profile
 | Cutting Kit (IP67)
 | | | Driver
 |



 **NO:** Må installeres av godkjent installator
EN: Only to be installed by an authorized electrician
DE: Nur von einer autorisierten Elektrofachkraft installieren lassen
FI: Asenna vain valtuutettu sähköasentaja
FR: Seulement pour être installé par un électricien autorisé
IS: Aðeins skal setja upp af viðurkenndum rafvirkri
ES: Solo para ser instalado por un electricista autorizado.
IT: Solo per essere installato da un elettricista autorizzato

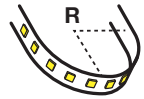
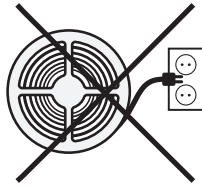
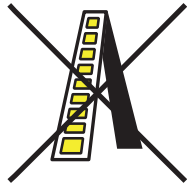
 **NO:** Slå av strømmen før montering
EN: Power off before installing
DE: Schalten Sie vor der Installation die Stromversorgung aus
FI: Katkaise virta ennen asennusta
FR: Couper le courant avant d'installer
IS: Slökktu á orku áður en þú setur upp
ES: Apague la alimentación antes de instalar
IT: Spegnerne l'alimentazione prima di installare



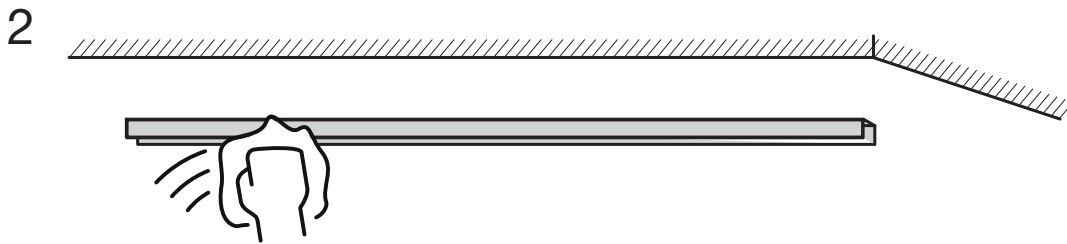
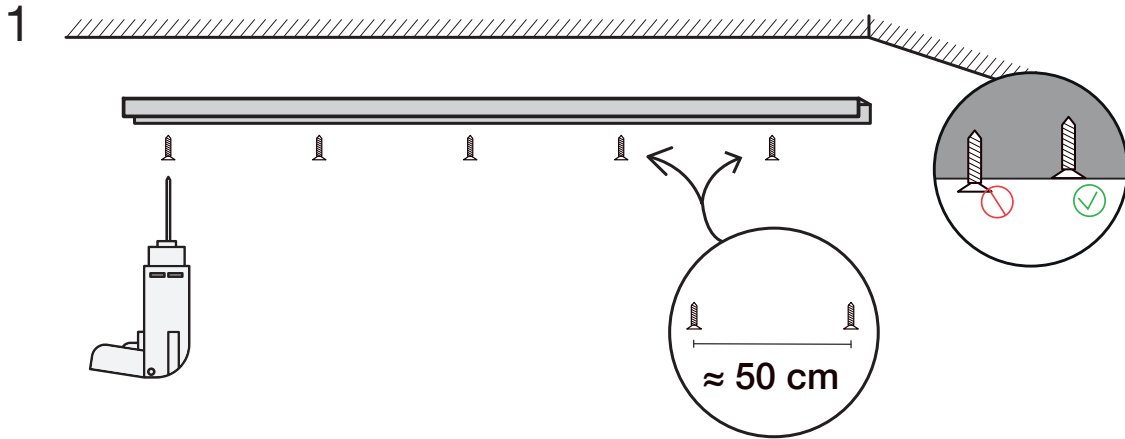
Management, Operation and Maintenance

THE LIGHT GROUP AS | Tlf.: +47 38 00 21 01 | E-Mail: post@tlg.no
Mjåvannsvegen 175 | 4628 | Kristiansand S | Norway

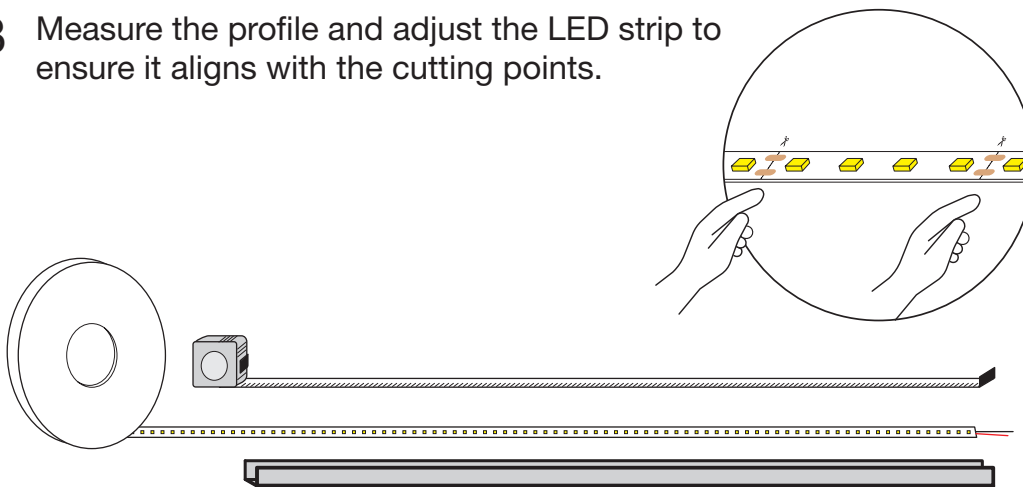
THE LIGHT GROUP GmbH | Phone: +49 511 807 486 10 | E-Mail: info@tlg.no
Am Schafbrinke 62 | 30519 | Hannover | Germany



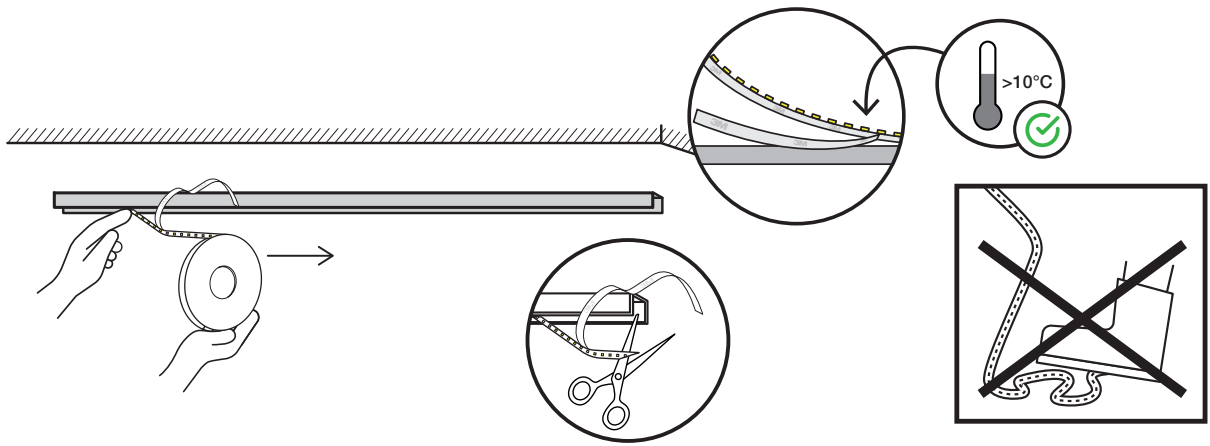
IP20: min R20mm
IP65/67: min R40mm



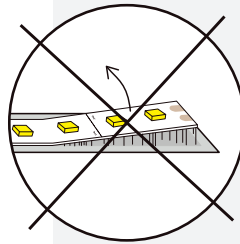
3 Measure the profile and adjust the LED strip to ensure it aligns with the cutting points.



4



Place the LED strip in the centre of the profile to ensure even light distribution.



NOTE:

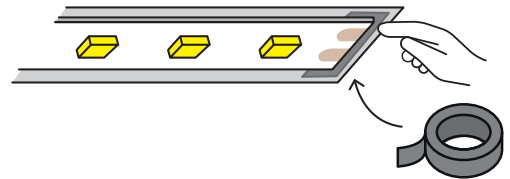
LED strips that have adhered to the profile cannot be removed. Attempting to do so may damage the LED strip.

IP>55



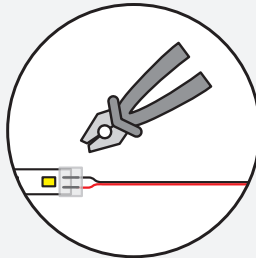
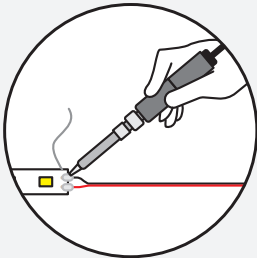
NOTE!

you must use our cutting kits, as our silicone glue has the correct properties for our LED strips.

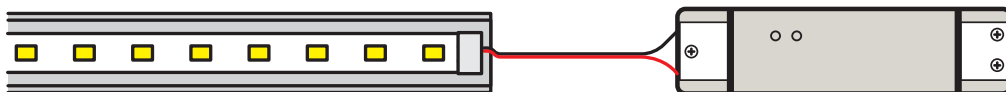


Place a piece of tape on the cut end to prevent short-circuiting against the profile.

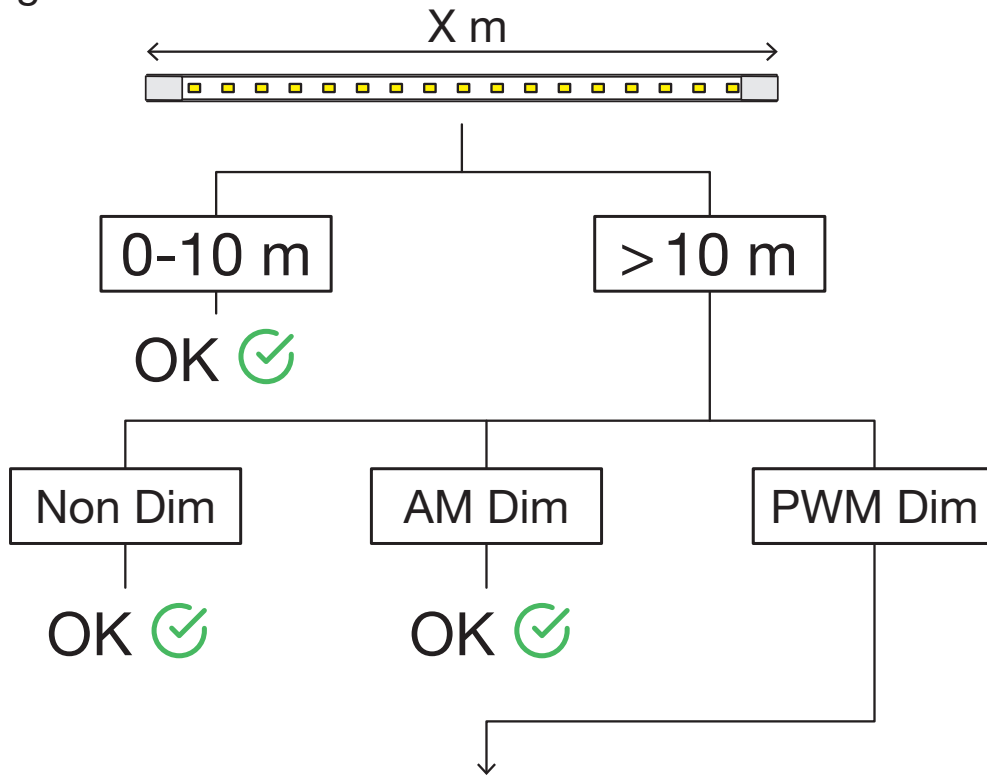
5 Connect the driver.



Solder or clip the wires if needed.

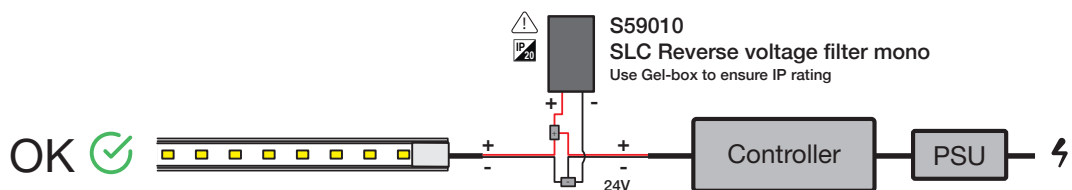
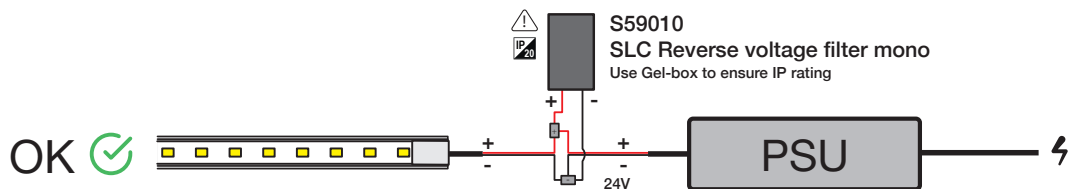
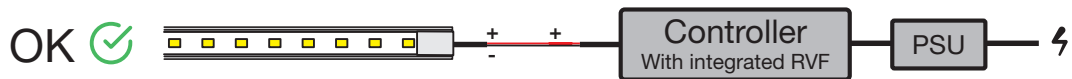


For long runs



Warning: Reverse voltage filter(RVF) required for dimming.

- Reverse voltage filter is integrated in some controllers and power supplies.
- If it is not integrated, use the SLC S59010 Reverse voltage filter. (RVF)
- Without such filter, reverse voltage oscillation from PWM dimming can occur and damage the LED strip.
- The product warranty will be void.



6 Always test the LED strips to make sure everything went as planned.

