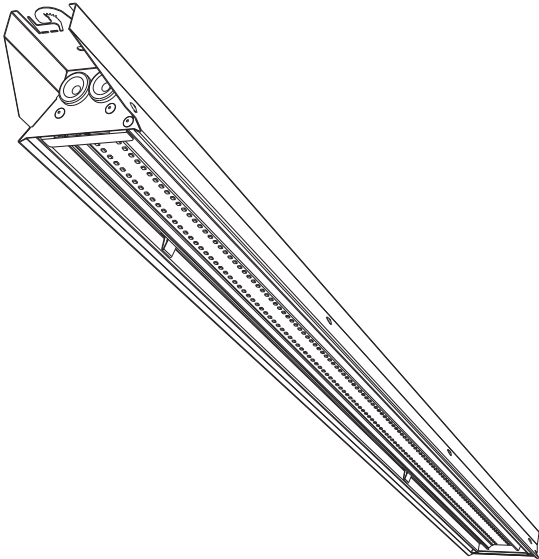
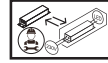


Fender

SLC1450
SLC1451

SLC1452
SLC1453

SLC
Scandinavian
Lighting Concept



POWER SELECTABLE



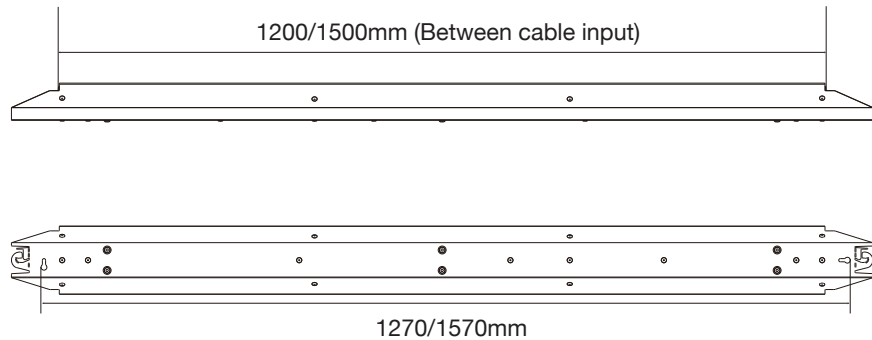
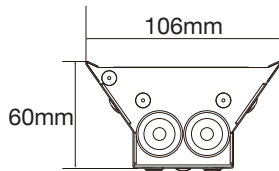
Fender 1500

| Power/W | Current | 30° | 60° | 90° | Sym | 105° | Switch | | | |
|---------|---------|-----|-----|---------|-----|------|--------|----|----|----|
| | | | | | | | 1 | 2 | 3 | 4 |
| 45W | 200mA | | | 8117lm | | | - | - | - | ON |
| 52W | 250mA | | | 9360lm | | | - | - | ON | - |
| 60W | 300mA | | | 10800lm | | | - | ON | - | - |
| 74W | 350mA | | | 13320lm | | | ON | - | - | - |
| 90W | 400mA | | | 16200lm | | | - | - | - | - |

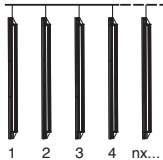
Fender 1200

| Power/W | Current | 30° | 60° | 90° | Sym | 105° | Switch | | |
|---------|---------|-----|-----|---------|-----|------|--------|----|----|
| | | | | | | | 1 | 2 | 3 |
| 34W | 200mA | | | 6100lm | | | - | - | ON |
| 42W | 250mA | | | 7561lm | | | - | ON | - |
| 50W | 300mA | | | 8949lm | | | ON | - | - |
| 60W | 350mA | | | 10575lm | | | - | - | - |

*Values is subject to change without notice



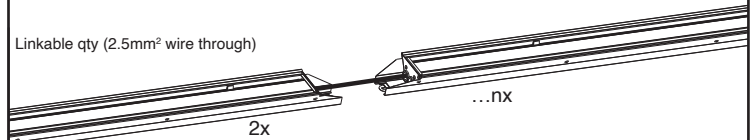
Circuit breakers



| conventional | B10 | B16 | C10 | C16 |
|--------------|-----|-----|-----|-----|
| 60W | 10 | 16 | 17 | 27 |
| 75W | 07 | 12 | 12 | 20 |

| DALI | B10 | B16 | C10 | C16 |
|------|-----|-----|-----|-----|
| 60W | 13 | 20 | 21 | 34 |
| 75W | 13 | 21 | 22 | 35 |

Linkable qty (2.5mm² wire through)



| Input Voltage | NX | NX |
|---------------|---------|---------|
| 230VAC | 20(60W) | 15(75W) |



NO: Må installeres av godkjent installatør
EN: Only to be installed by an authorized electrician
DE: Nur von einer autorisierten Elektrofachkraft installierenlassen
FI: Asenna vain valtuutettu sähköasentaja
FR: Seulement pour être installé par un électricien autorisé
IS: Aðeins skal setja upp af viðurkenndum rafvirkri
ES: Solo para ser instalado por un electricista autorizado.
IT: Solo per essere installato da un elettricista autorizzato
DK: Skal installeres af en godkendt installatør



NO: Slå av strømmen før montering
EN: Power off before installing
DE: Schalten Sie vor der Installation die Stromversorgung aus
FI: Katkaise virta ennen asennusta
FR: Couper le courant avant d'installer
IS: Slökktu á orku áður en þú setur upp
ES: Apague la alimentación antes de instalar
IT: Spegnerre l'alimentazione prima di installare
DK: Sluk for strømmen før installation.



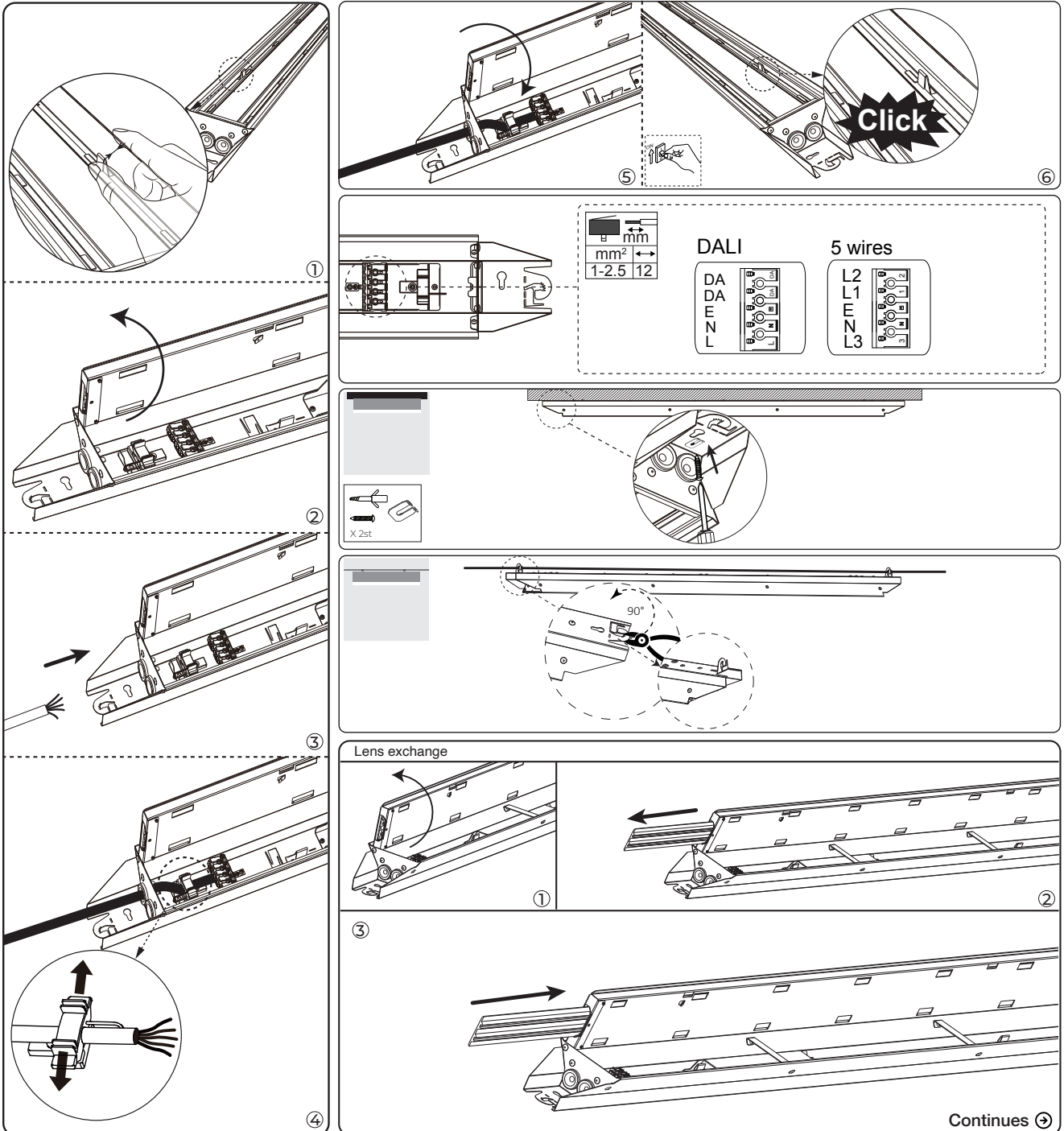
Management, Operation
and Maintenance

Fender

SLC1450
SLC1451

SLC1452
SLC1453

SLC
Scandinavian
Lighting Concept



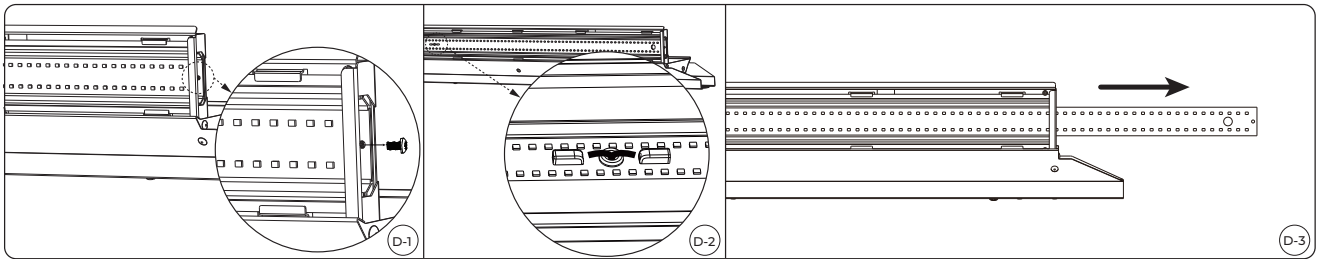
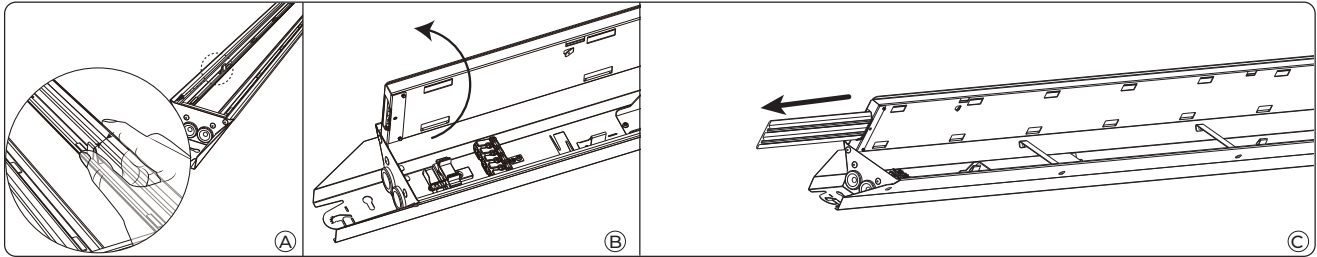
Fender

SLC1450
SLC1451

SLC1452
SLC1453

SLC
Scandinavian
Lighting Concept

- A. Press the clips firmly.
- B. Open the cover.
- C. Pull out the lenses, exchange to your preferred lens.
(Do not touch the LED's)
- D. Remove the protective coil and the nylon rivets on the PCB board, and then pull out the PCB board.
- E. Replacing the LED module or power supply.



E

Lens exchange

Replace LED module

Replace the driver

Replaceable (LED only) light source by a professional.

Replaceable control gear by a professional.

| | CCT | EET | | | |
|--|----------------|-----|--|--|--|
| | 60W/75W(4000K) | C | | | |

| Lenses | | | | | |
|--------|---------|---------|---------|---------|---------|
| | 30° | 60° | 90° | 105° | Sym |
| 1200 | SLC1454 | SLC1455 | SLC1456 | SLC1457 | SLC1458 |
| 1500 | SLC1459 | SLC1460 | SLC1461 | SLC1462 | SLC1463 |

Choose the correct lens

