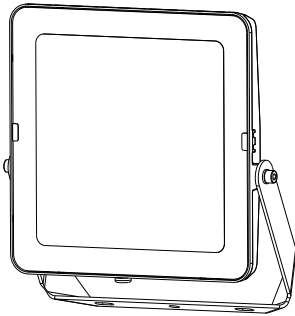


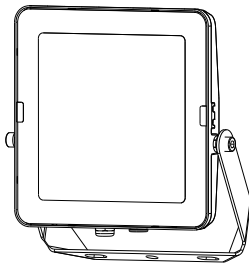
# LITE

SLC1430  
SLC1431

**SLC**  
Scandinavian  
Lighting Concept



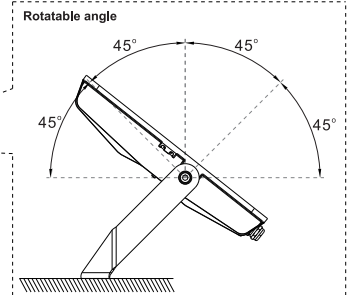
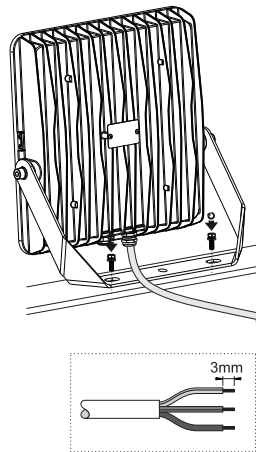
100W



50W

## Installation Instructions

Recommended screw size: M10



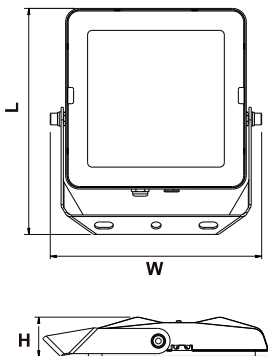
Junction Box

\* When the exposed wire is only 0.3m, it should be well protected when wiring to prevent water from being inhaled from the incoming wire.

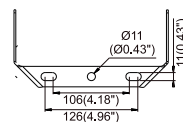
L	brown	black
N	blue	white
⊕ GND	yellow/green	green



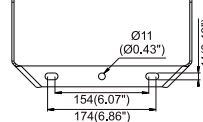
\* Types of application: for outdoor and industrial lighting.  
\* Can not support to change the cable of lamp, if the cable or its connector damaged, suggest to scrap it.



50W



100W



	L	W	H
50W	251mm	235mm	44mm
100W	347mm	316mm	50mm

**NO:** Må installeres av godkjent installatør

**EN:** Only to be installed by an authorized electrician

**DE:** Nur von einer autorisierten Elektrofachkraft installieren lassen

**FI:** Asenna vain valtuutettu sähköasentaja

**FR:** Seulement pour être installé par un électricien autorisé

**IS:** Aðeins skal setja upp af viðurkenndum rafvirki

**ES:** Solo para ser instalado por un electricista autorizado.

**IT:** Solo per essere installato da un elettricista autorizzato



**NO:** Slå av strømmen før montering

**EN:** Power off before installing

**DE:** Schalten Sie vor der Installation die Stromversorgung aus

**FI:** Katkaise virta ennen asennusta

**FR:** Couper le courant avant d'installer

**IS:** Slökktu á orku áður en þú setur upp

**ES:** Apague la alimentación antes de instalar

**IT:** Spegner e l'alimentazione prima di installare