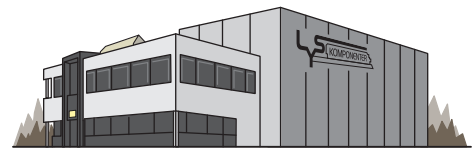


# LED strip

**SLC**  
Developed by  
The Light Group



|                                       |  |                    |                  |                          |
|---------------------------------------|--|--------------------|------------------|--------------------------|
| <b>Drill</b><br>                      | <b>Soldering iron</b><br>                  | <b>Profile</b><br> | <b>Cover</b><br> | <b>LED-strip</b><br>     |
| <b>Measuring tape</b><br>             | <b>Scissors</b><br>                        |                    |                  | <b>Cables</b><br>        |
| <b>Tape</b><br>                       | <b>Screws</b><br>(1x per 30cm profile)<br> |                    |                  | <b>Power Control</b><br> |
| <b>End caps</b><br>x2 per profile<br> | <b>Cutting Kit (IP67)</b><br>              |                    |                  | <b>Driver</b><br>        |



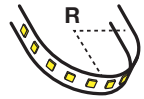
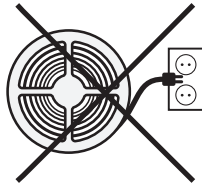
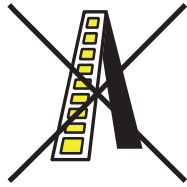
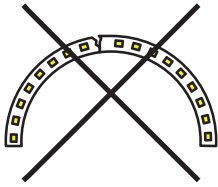
**NO:** Må installeres av godkjent installatør  
**EN:** Only to be installed by an authorized electrician  
**DE:** Nur von einer autorisierten Elektrofachkraft installieren lassen  
**FI:** Asenna vain valtuutettu sähköasentaja  
**FR:** Seulement pour être installé par un électricien autorisé  
**IS:** Aðeins skal setja upp af viðurkenndum rafvirkni  
**ES:** Solo para ser instalado por un electricista autorizado.  
**IT:** Solo per essere installato da un elettricista autorizzato



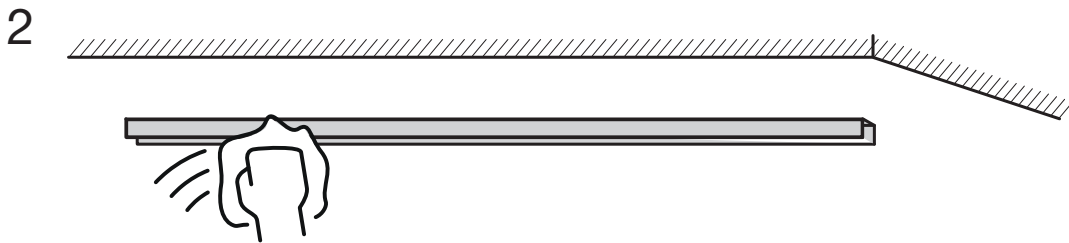
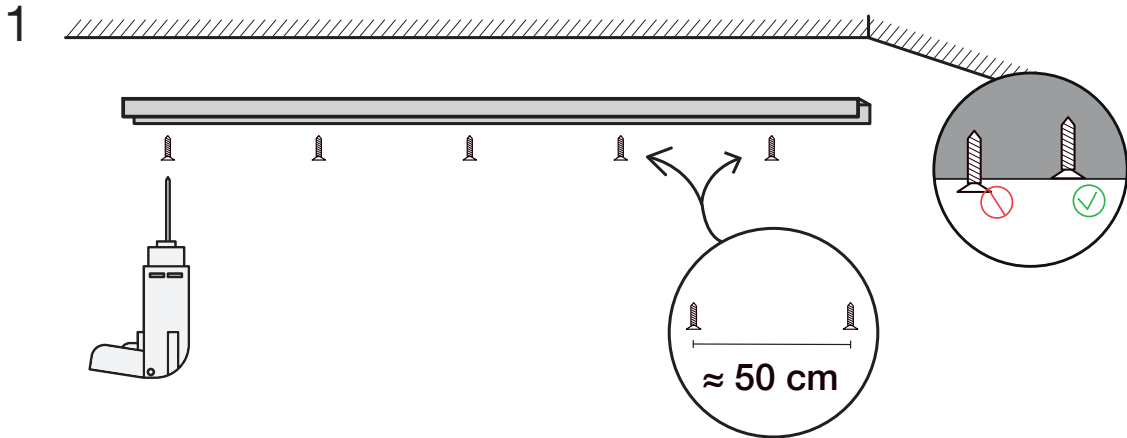
**NO:** Slå av strømmen før montering  
**EN:** Power off before installing  
**DE:** Schalten Sie vor der Installation die Stromversorgung aus  
**FI:** Katkaise virta ennen asennusta  
**FR:** Couper le courant avant d'installer  
**IS:** Slökktu á orku áður en þú setur upp  
**ES:** Apague la alimentación antes de instalar  
**IT:** Spegnerne l'alimentazione prima di installare



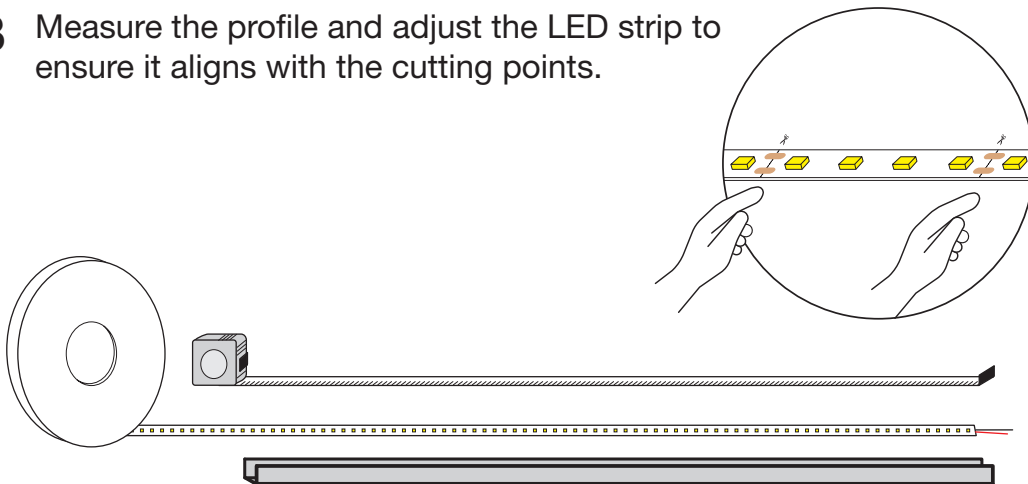
Management, Operation  
and Maintenance

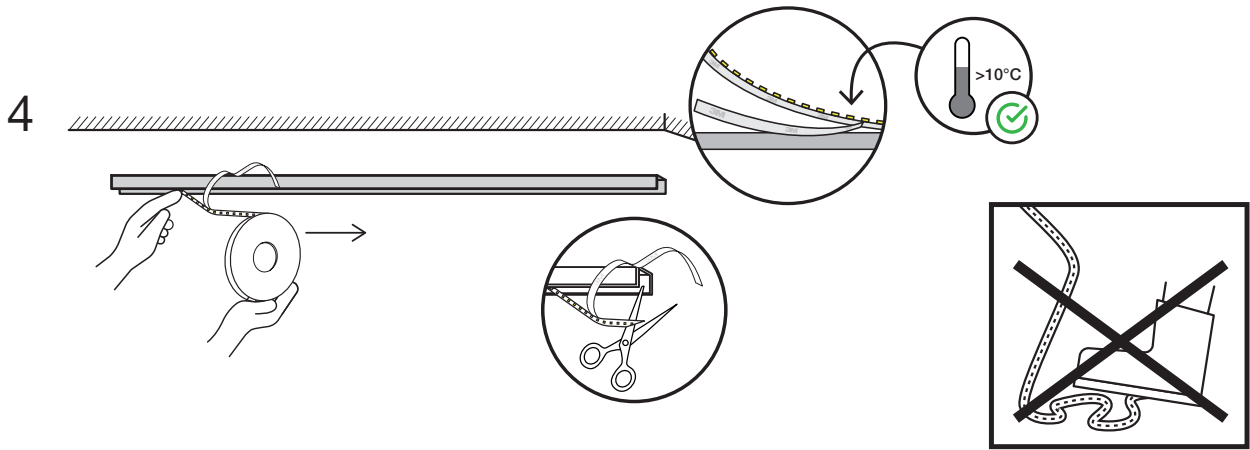


IP20: min R20mm  
IP65/67: min R40mm

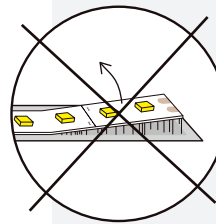


3 Measure the profile and adjust the LED strip to ensure it aligns with the cutting points.





Place the LED strip in the centre of the profile to ensure even light distribution.

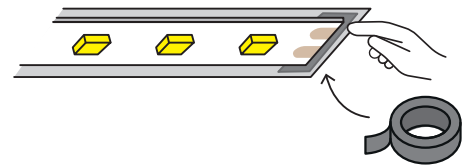


**NOTE:**  
LED strips that have adhered to the profile cannot be removed. Attempting to do so may damage the LED strip.

IP>55

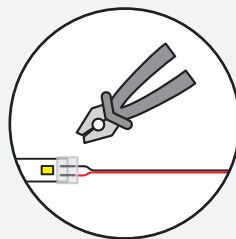
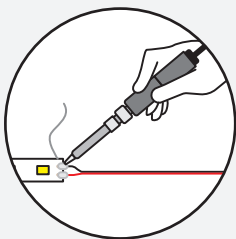


**NOTE!**  
you must use our cutting kits, as our silicone glue has the correct properties for our LED strips.

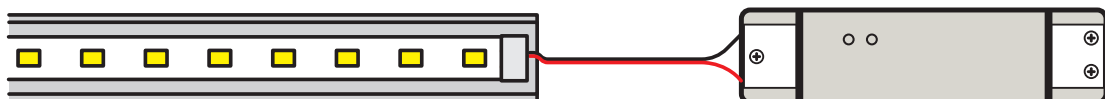


Place a piece of tape on the cut end to prevent short-circuiting against the profile.

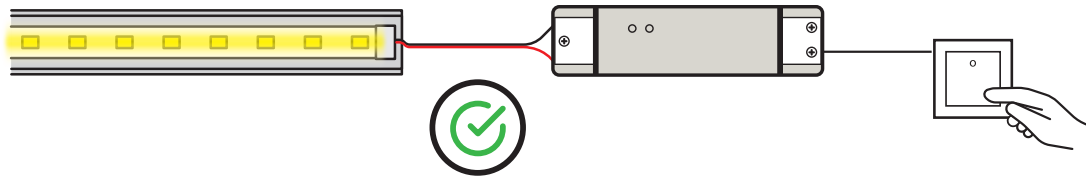
## 5 Connect the driver.



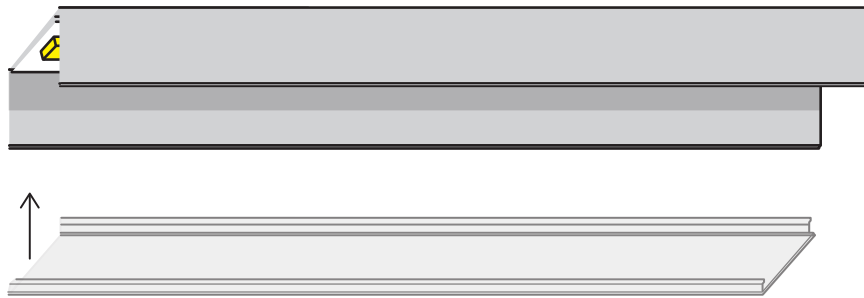
Solder or clip the wires if needed.



6 Always test the LED strips to make sure everything went as planned.



7



8

